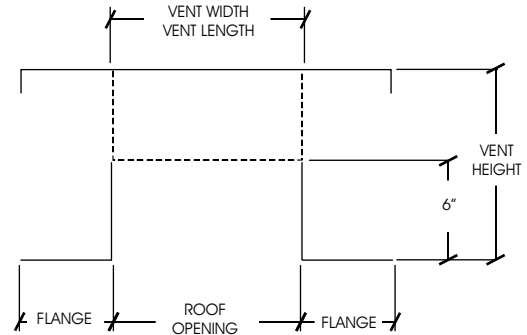
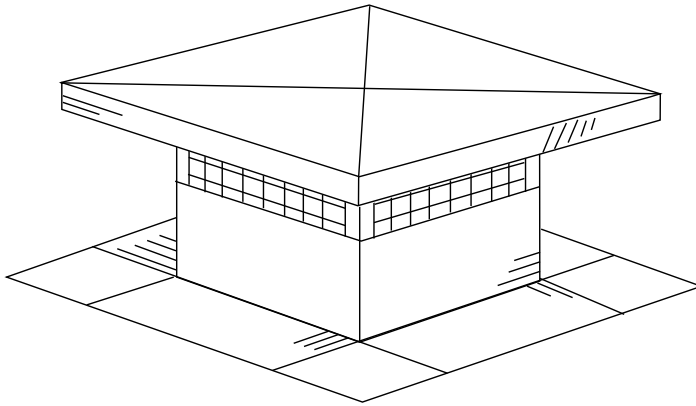




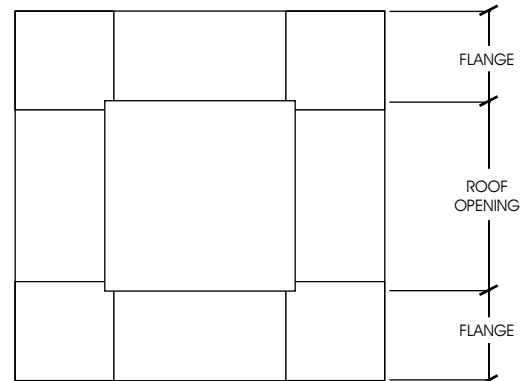
PRODUCT DATA

FLAT ROOF JACK VENT

Roof ventilating product designed for flat roof installation. Allows for air movement and combustion release in conjunction with attic cavity ventilation systems.



SECTION VIEW



BOTTOM VIEW

STYLE NO.	VENT WIDTH	VENT LENGTH	VENT HEIGHT	FLANGE SIZE	ROOF OPENING*	FREE AREA**
RJ1010	10"	10"	11"	4"	10" x 10"	109
RJ1212	12"	12"	11"	4"	12" x 12"	139
RJ1414	14"	14"	11"	4"	13" x 13"	168
RJ1818	18"	18"	11"	4"	16" x 16"	226
RJ2424	24"	24"	11"	4"	19" x 19"	335

* Minimum cut out or sub flashing hole size

** Square inches of free air flow. Calculations include bird screen.

STANDARD MATERIALS

ASTM A653/A653M -G90 hot dipped

Galvanized steel, 28GA and 26GA.

ASTM D9092 - mill phosphatized coating for painting.

ASTM B370 - Sheet copper, 16oz and 20oz.

.025 x .025 hot dipped galvanized 23GA wire bird screen.

INSTALLATION

Before install, ensure that the substrate is uniform and even. Do not install venting products on uneven substrate.

Installation shall be made in accordance with recognized sheet metal practices. SMACNA Architectural Sheet Metal Manual 6th Edition specifications shall be used as a guide and basis for detail whenever applicable.

C & J Metal Products' venting products can be nailed or riveted using conventional hand or power tools. Flashings shall be properly fastened to the substrate by means of wood or metal screws. When fastening dissimilar metals the use of stainless steel is recommended. Use of neoprene washers or similar gasketing material is acceptable.

NOTE: Recommended use of this product is for exhaust of warm dry or slightly moist air only. This product is not intended for venting or exhaust grease or liquid.

03-05

C & J METAL PRODUCTS INC

Architectural Sheet Metal Fabricators Since 1946

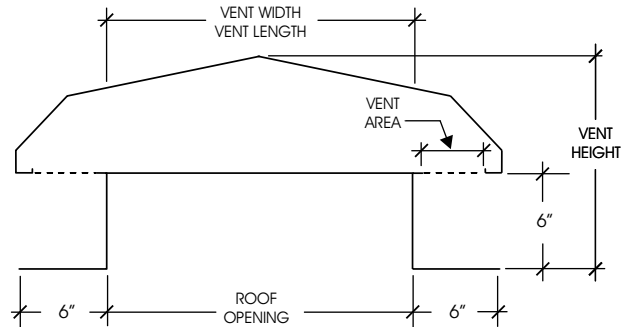
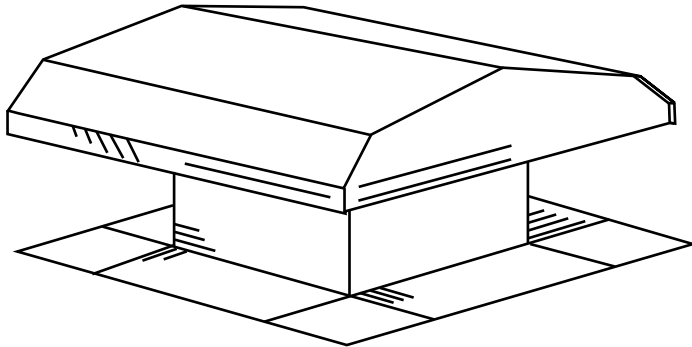
6925 DOWNEY AVENUE LONG BEACH CA 90805
800-500-8660 • 562-634-3101 • 562-634-8823FAX
INTERNET: www.CJMetals.com



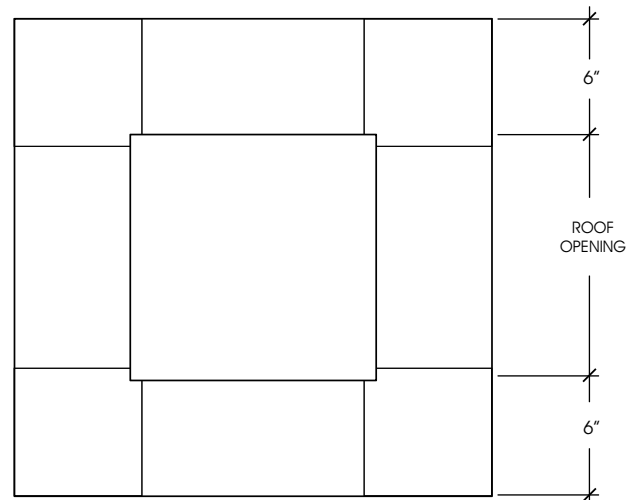
PRODUCT DATA

GRAVITY ROOF VENT

Roof ventilating product designed for flat roof installation. Allows for air movement and combustion release in conjunction with attic cavity ventilation systems.



SECTION VIEW



BOTTOM VIEW

PIN	VENT WIDTH	VENT LENGTH	VENT HEIGHT	BODY HEIGHT	ROOF OPENING*	FREE AREA**
VN3030	30"	30"	16"	6"	21"x21"	420
VN3636	36"	36"	18"	6"	24"x24"	535
VN4848	48"	48"	18"	6"	27"x27"	688

* Minimum cut out or sub flashing hole size

** Square inches of free air flow. Calculations include bird screen.

STANDARD MATERIALS

ASTM A653/A653M -G90 Galvanized steel, 24GA and 22GA.

ASTM D9092 - mill phosphatized coating for painting.

.025 x .025 hot dipped galvanized 23GA wire bird screen.

INSTALLATION

Before install, ensure that the substrate is uniform and even. Do not install venting products on uneven substrate.

Installation shall be made in accordance with recognized sheet metal practices. SMACNA Architectural Sheet Metal Manual 6th Edition specifications shall be used as a guide and basis for detail whenever applicable.

C & J Metal Products' venting products can be nailed or riveted using conventional hand or power tools. Flashings shall be properly fastened to the substrate by means of wood or metal screws. When fastening dissimilar metals the use of stainless steel is recommended. Use of neoprene washers or similar gasketing material is acceptable.

NOTE: Recommended use of this product is for exhaust of warm dry or slightly moist air only. This product is not intended for venting or exhaust grease or liquid.